

Clipping points

Introduction

Point clips are used to secure points in the normal or reverse position.

Securing points

Facing points on running lines must be clipped and locked if:

- you cannot be sure that the points will remain in the correct position, or
- there is an instruction at the points to clip and lock them, or
- the points are included in instructions under a Traffic Notice.

An SL or XL lock is used to lock point clips. Point clips are kept in Equipment Cabinets.

Use standard point clips for standard points. Standard points have a switch blade and stock rail of similar depth. The standard point clip has a simple hook for the switch blade flange.

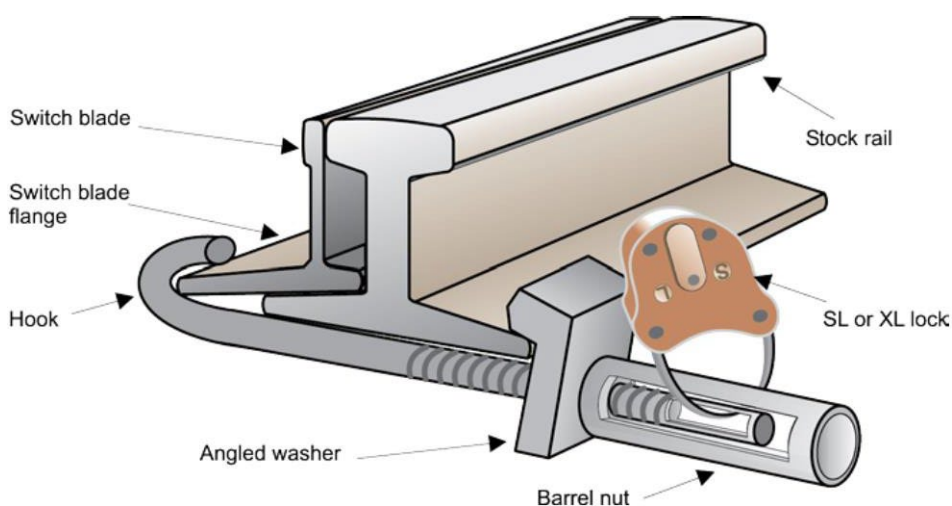


Figure 1: Example of a fitted standard point clip

Clipping points

Use tangential point clips for tangential points. Tangential points have a shallower switch blade. The tangential point clip has a stepped hook to suit the shallower switch blade.

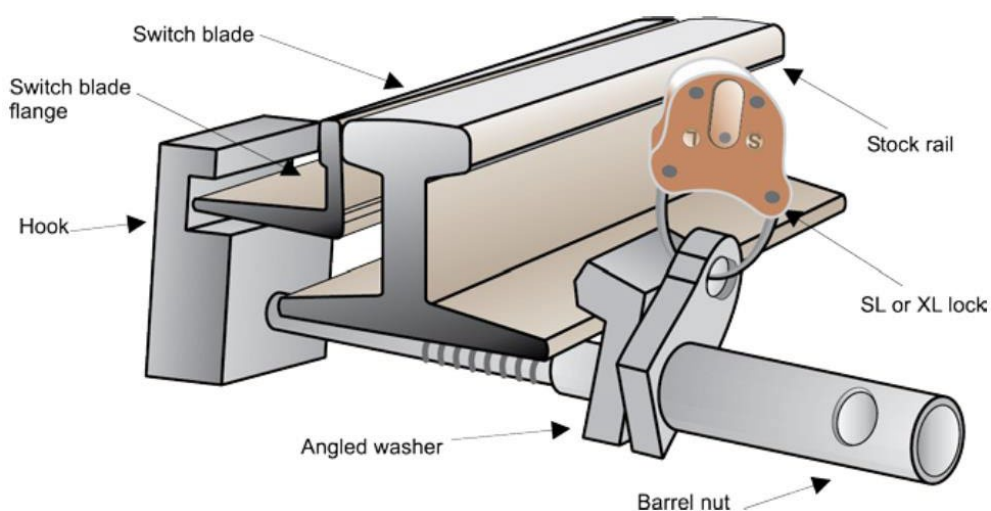


Figure 2: Example of a fitted tangential point clip

Use the point clip provided in the equipment cabinet for the swingnose used in some points. Some swingnose points use a tangential point clip fitted to the switch blade.

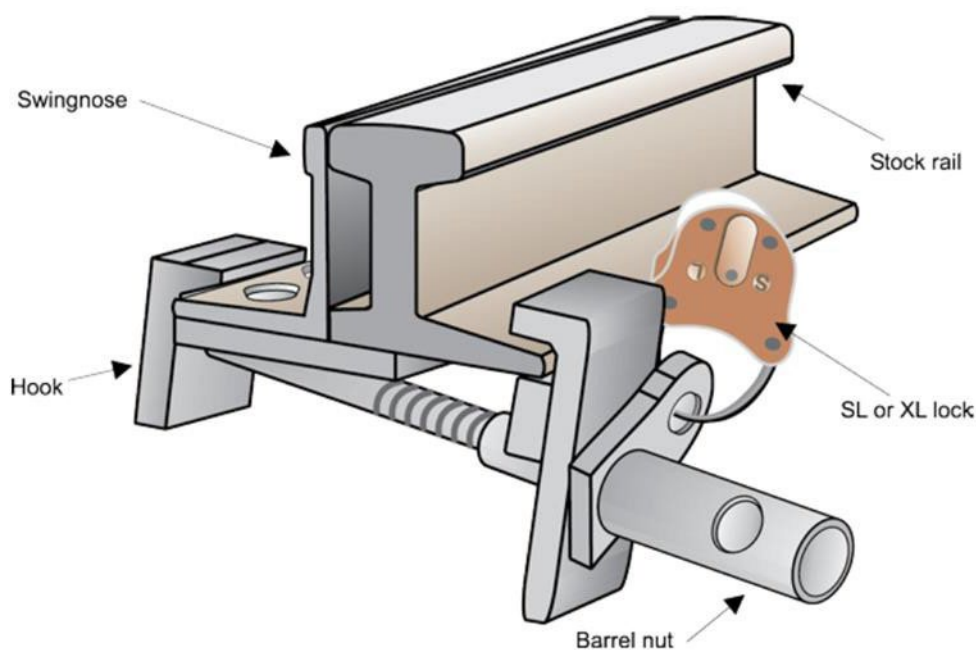


Figure 3: Example of a tangential point clip fitted to the swingnose

Clipping points



Figure 4: Example of a point clip fitted to the swingnose of VAE points. This type of point uses a special point clip fitted to a plate under the movable swingnose of the points.

Fitting a points clip

Qualified Worker

1. Make sure that you can do the work safely.
2. Where necessary, get authority from the Traffic Controller to clip the points and an assurance the points will not be operated.
3. Make sure that you use the correct type of points clip.
4. Make sure that the points are in the correct position, and that the blade is tightly against the stock rail.
5. Fit the points clip at the correct position for that set of points, as close as possible to the tapered end of the switch blade.
6. Make sure that the points clip is fitted:
 - to the underside of the rail, and
 - between the sleepers.

Note:

Install the point clip for standard and tangential points so that the barrel nut of the clip is outside the four-foot.

Clipping points

7. Position the jaws of the points clip to the rails and tighten. Hand-tighten the barrel nut, making sure the angled washer is fitted as shown in the figures.
8. Make sure that the points are properly closed.
9. Lock the points clip using an SL lock or, if authorised, an XL lock.
10. Make sure that the route is correct before allowing rail traffic to travel.

Procedures

Nil

Effective date

28 April 2025